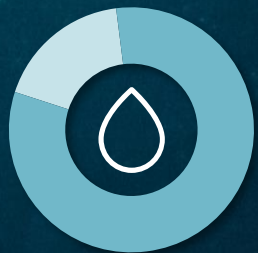


CIRCULAR SHOWERS



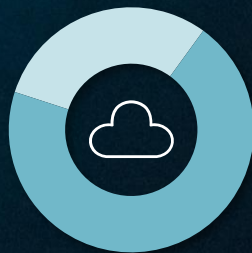
FOR THIRD-PARTY
INSTALLERS



80% WATER



70% ENERGY

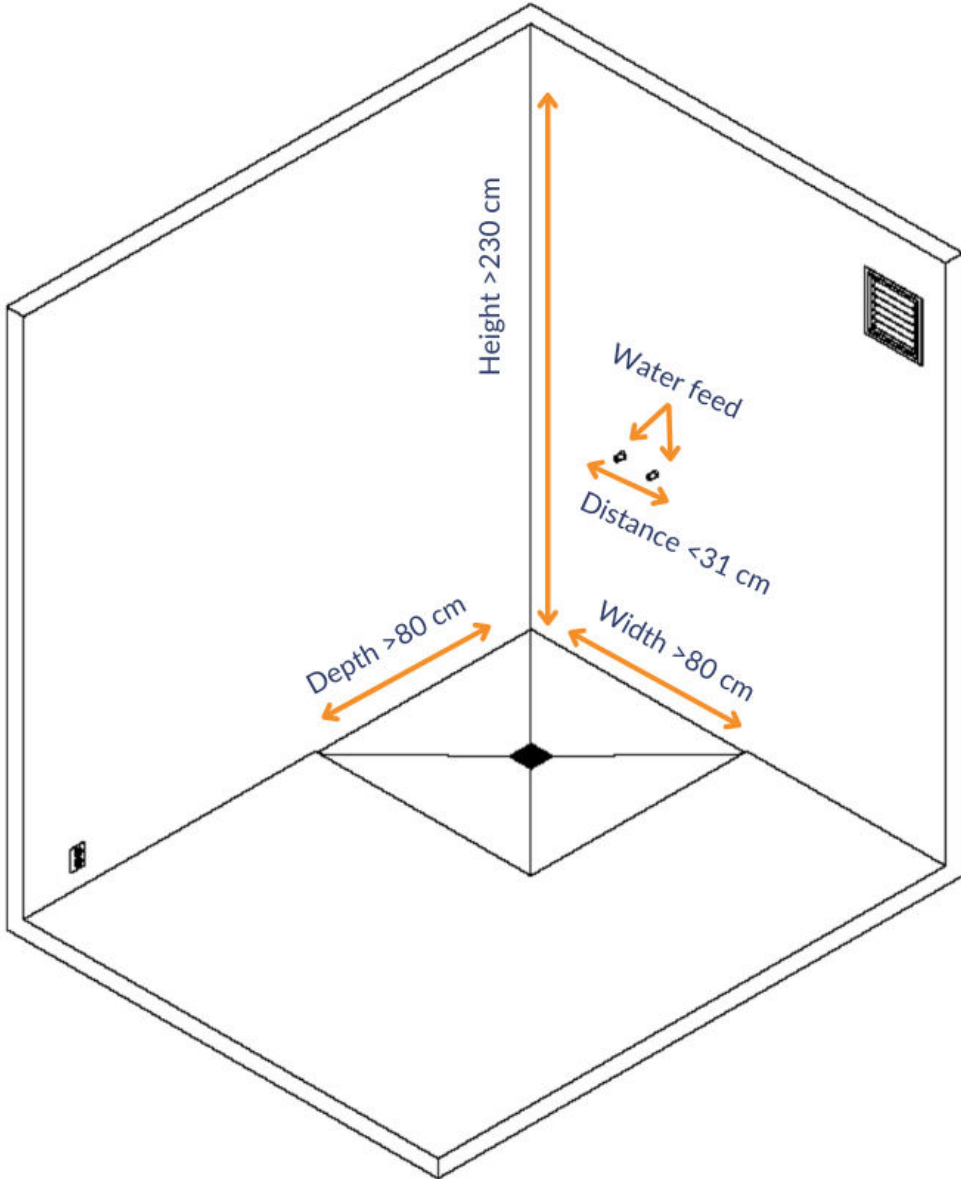


70% CO₂



CHECKLIST

New build/refurbishment

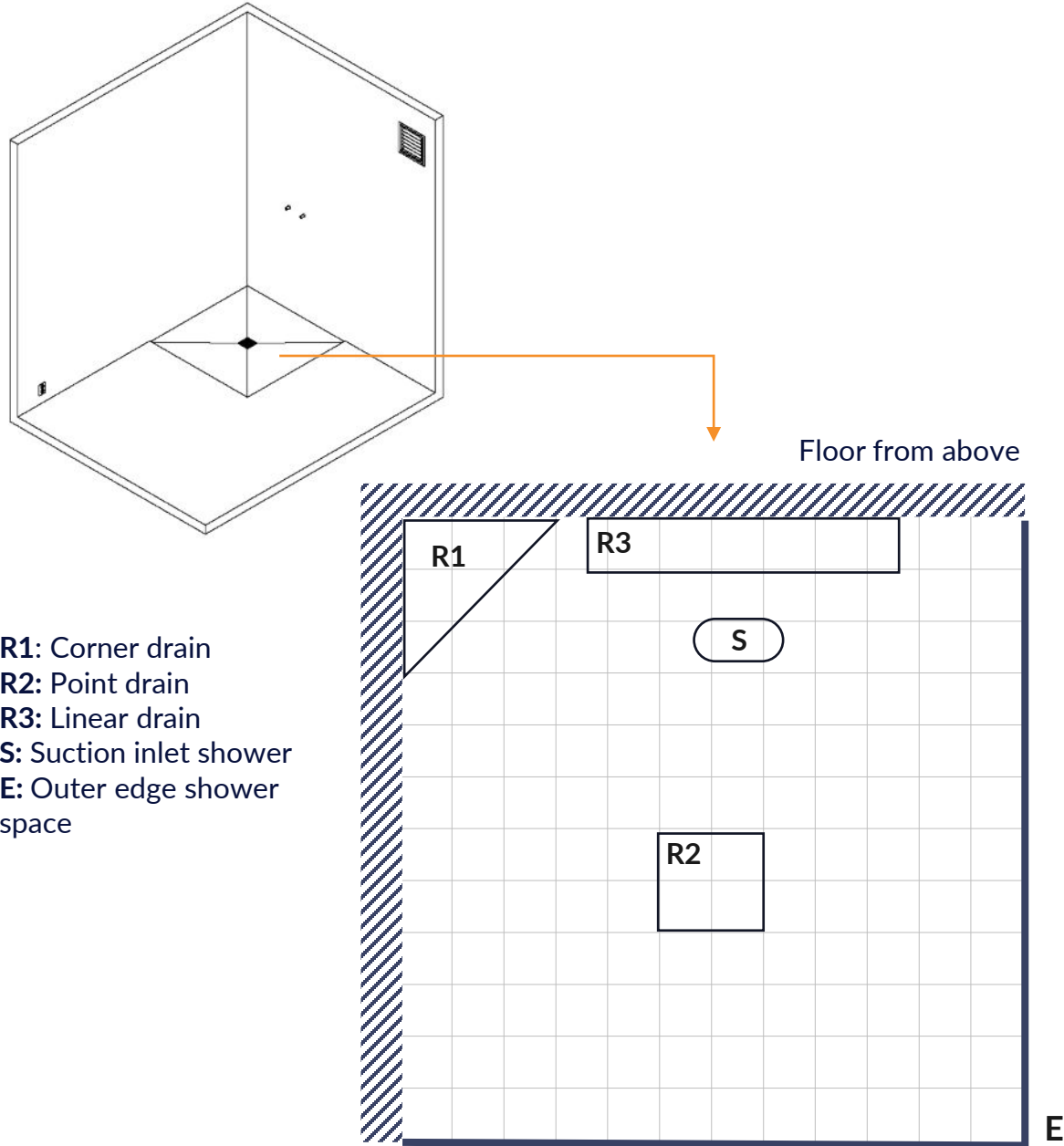


SHOWER SPACE AND WATER FEED

A minimum shower space of 80 x 80 x 230 cm is required to fit the Flow Loop shower.

Water needs to come from separate hot and cold water pipes.

Distance between water feed should be a minimum of 31 cm to accommodate inside the shower.



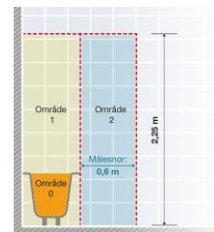
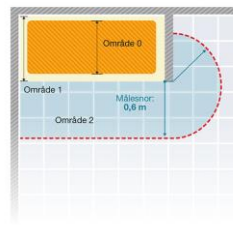
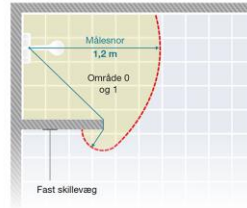
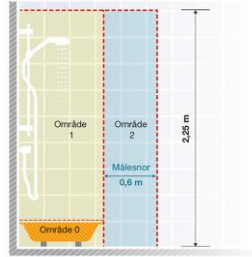
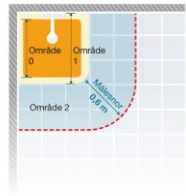
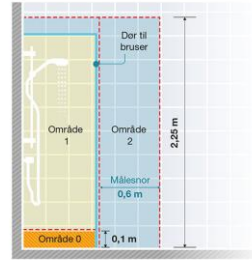
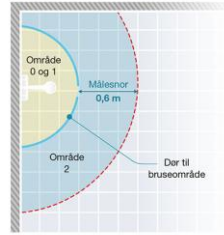
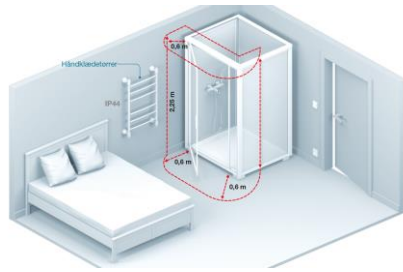
FLOOR INCLINATION, DRAIN LOCATION AND EDGE

To allow the shower to recirculate water, the floor inclination, placement of the drain, and the edge surrounding the shower space must allow a reservoir high enough for the suction inlet (S).

Depending on the placement of the drain, floor inclination, and suction placement, small or big reservoirs will build up during recirculation. However, the edge (E) needs to be 5 mm higher than the suction inlet (S). The suction inlet is located 105 mm from the wall.

[Danish Building Standards.](#)





ELECTRICITY

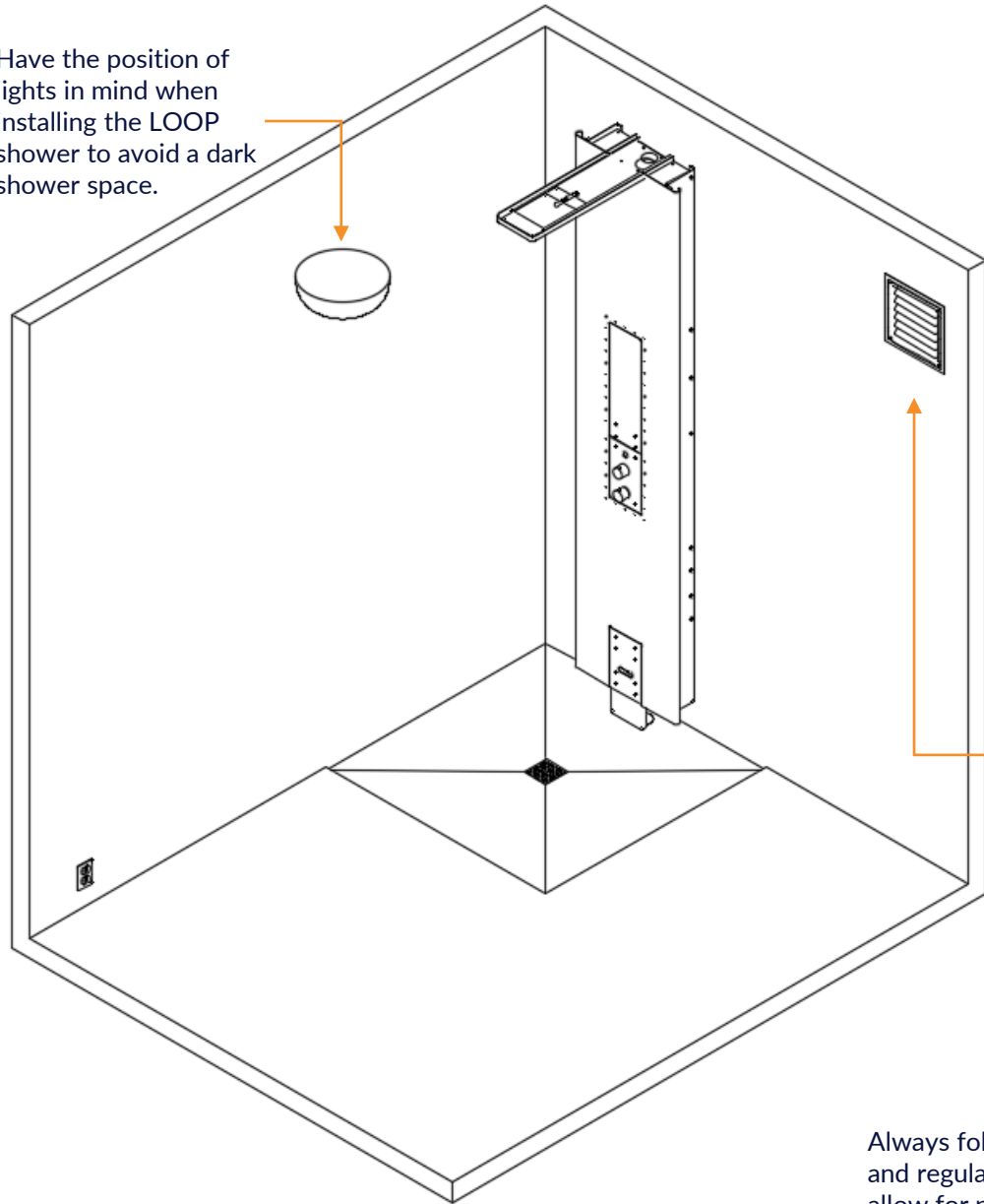
To install a Flow Loop shower, a power outlet with 230V is required. However, there are certain rules and regulations when making electric installations in wet rooms.

The bathroom is arranged into different wet zones on the placement of the shower. High voltage devices such as the power supply unit need to be placed in Zone 3 (outside Zone 2).

[Danish Electric Rules.](#)



Have the position of lights in mind when installing the LOOP shower to avoid a dark shower space.



Always follow rules and regulations to allow for proper ventilation.

LIGHTING AND VENTILATION

When installing the LOOP shower, make sure to consider the position of the head shower to ensure that it is not blocking ceiling lights and making the shower dark.

When preparing the bathroom space, make sure to follow rules and regulations regarding ventilation.

[Rules and regulations.](#)





DRAIN TYPES

Shower drains can be divided into several types: square drains, circular drains, corner drains, linear drains, and shower trays.

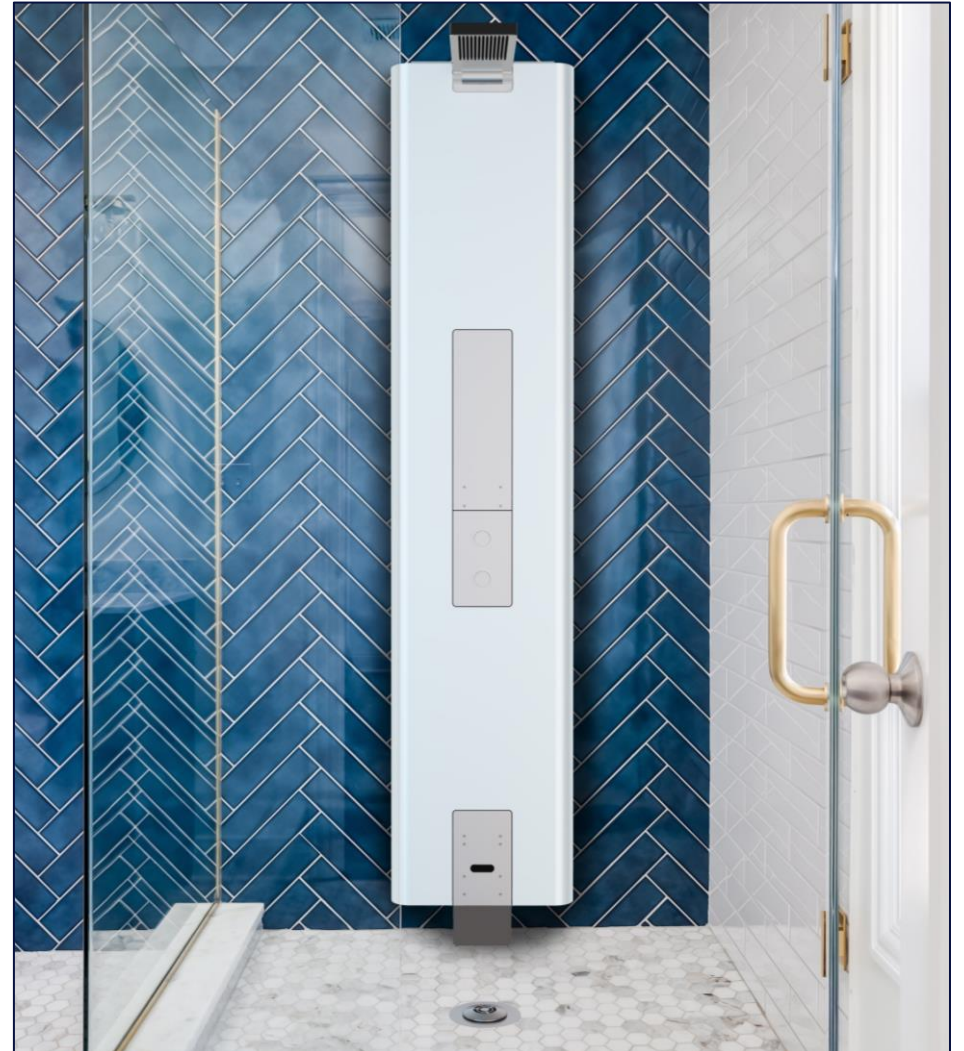
These come from several different manufacturers with different models, versions, sizes, and geographical deviations.

Flow Loop currently supports a number of drains from the most common drain types used in Denmark, and the catalog is expanding.

When verifying if the customer's drain is to be found in Flow Loop's catalog, mount the drain plug in the customer's shower drain and make sure it creates a seal, enabling the build-up of a water reservoir for recirculation.

RULES & REGULATIONS

1. Ensure that the installation is made in a legal bathroom.
2. For special electrical installations, refer to [this](#).
3. For special plumbing installations, refer to [this](#).
4. Check the existing Danish manual for inspiration.



DRAIN CATALOG

Supported drains



DRAIN TYPES

Shower drains can be divided into several types: square drains, circular drains, corner drains, linear drains, and shower trays.

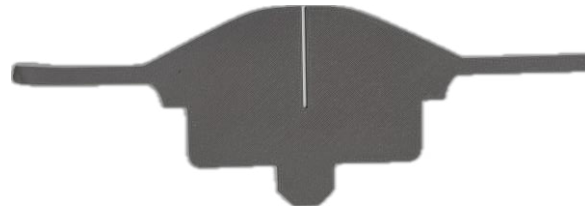
These come from several different manufacturers with different models, versions, sizes, and geographical deviations.

Flow Loop currently supports a number of drains from the most common drain types used in Denmark, and the catalog is expanding.

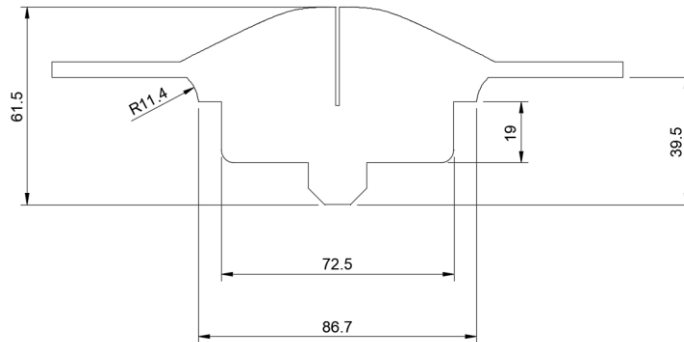
When verifying if the customer's drain is to be found in Flow Loop's catalog, mount the drain plug in the customer's shower drain and make sure it creates a seal, enabling the build-up of a water reservoir for recirculation.



Drain silhouette,
assembled.



Drain silhouette,
single piece.



Major dimensions.
The file can be
accessed via Flow
Loop.



3D-printed inlay.



Inlay mounted in drain.

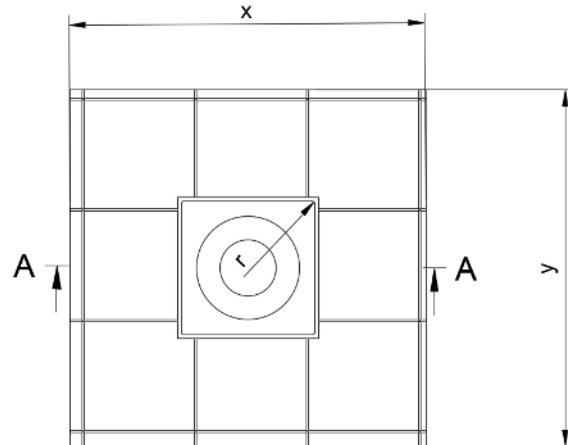
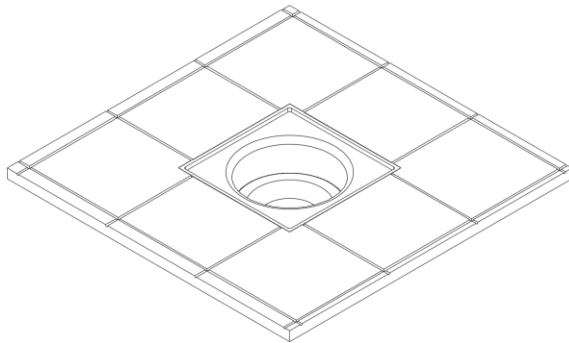
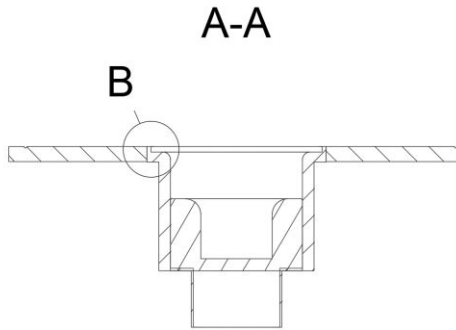
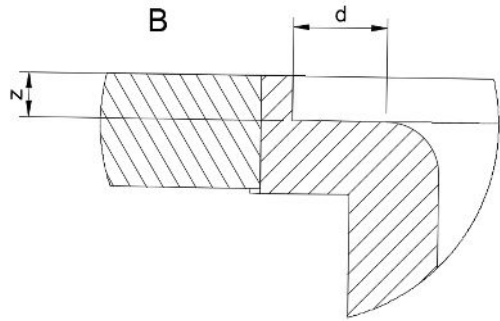
CLICKER DOME AND INLAY

DRAIN SILHOUETTE

To quickly ensure that Flow Loop's clicker dome can fit inside the drain, a silhouette profile has been created with matching dimensions as the actual clicker dome. To see if the clicker dome can fit inside the drain, simply remove the top grate of the drain, put the profile in, and make sure it can fit without interfering with the drain geometry.

INLAY

For some drain models, the sloping of the drain from the edge into the water lock is rather steep, giving a very limited flat surface for the drain plate to seal. To solve this, an inlay needs to be installed. This inlay is a 3D-printed frame that is mounted inside the drain with silicone, creating a flat surface that enables a proper seal. An inlay may also be used in other scenarios where it's difficult to create a seal, e.g. the surface of the drain is uneven.



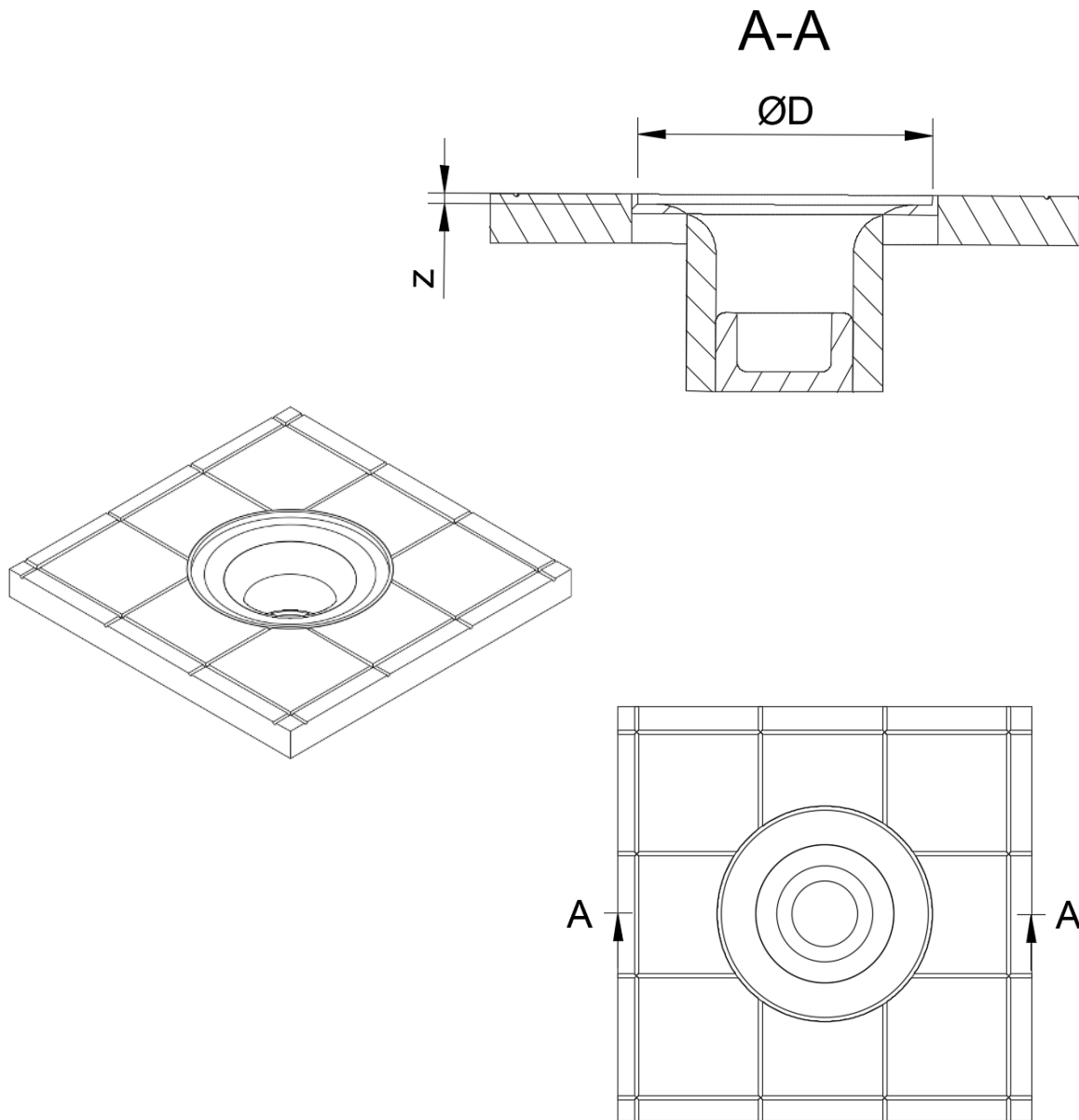
SQUARE DRAINS

Flow loop supports square drain with dimensions within the following range. If the flat surface, d , is less than 10 mm, an inlay is required to create a seal. If z is less than the lower limit, it will still be functioning, however, the top of the drain plate will be above the floor level at the drain.

Contact Flow Loop if the drain is outside of the given range for further support.

	Lower limit (mm)	Upper limit (mm)
x	139	141
y^*	139	141
z	3	5
d	10	-
r	-	6

*Square drains require that x is equal to y

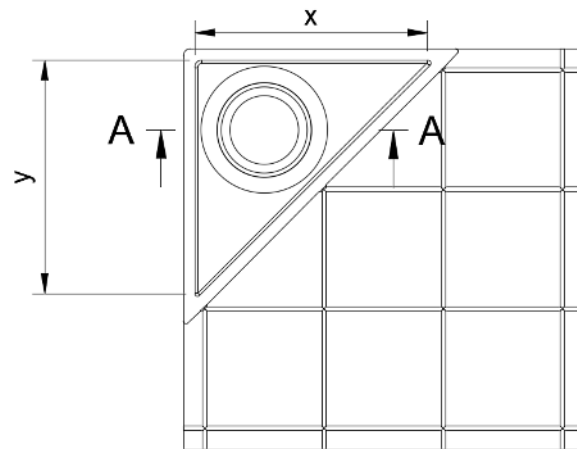
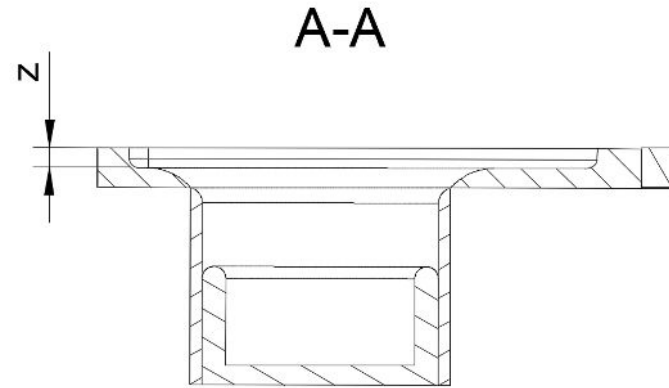
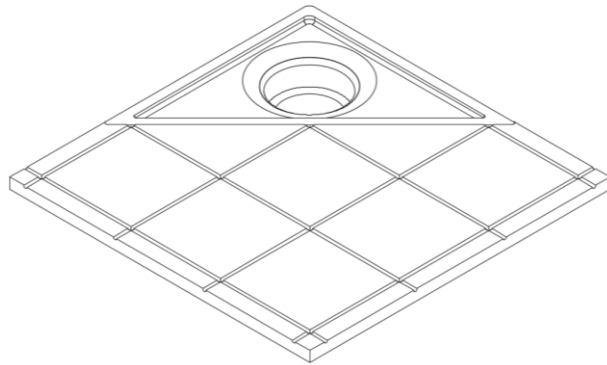


CIRCULAR DRAINS

Flow Loop supports circular drains with dimensions within the following ranges (D_1 , D_2 , D_3). If z is less than the lower limit, it will be functioning, however, the top of the drain plate will be above the floor level at the drain.

Contact Flow Loop if the drain is outside of the given range for further support.

	Lower limit (mm)	Upper limit (mm)
D_1	148	150
D_2	152	154
D_3	162	164
z	3	5



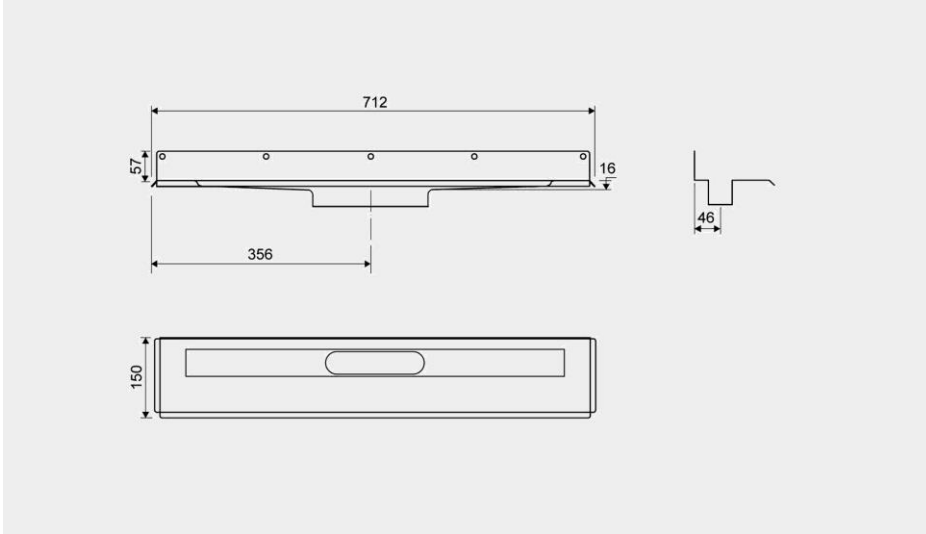
CORNER DRAINS

Flow Loop supports corner drains with dimensions within the following range. If z is less than the lower limit, it will be functioning, however, the top of the drain plate will be above the floor level at the drain.

Contact Flow Loop if the drain is outside of the given range for further support.

	Lower limit (mm)	Upper limit (mm)
x	195	197
y^*	195	197
Z	3	5

*Corner drains require that x is equal to y



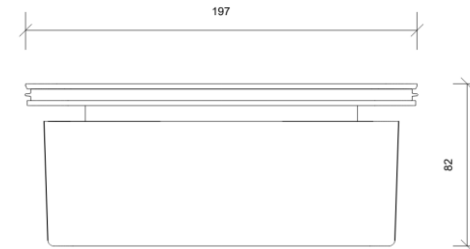
Example drawing from Unidrain Classic Line

LINEAR DRAINS

Flow Loop currently supports linear drains from the brand Unidrain, Classic Line series. The model needs to have the water lock located centrally, right under the shower. The waterlock needs to be model 1820.0040.

Contact Flow Loop if the drain is outside of the given range for further support.

	Lower limit (mm)	Upper limit (mm)
Length	300	1200



Unidrain waterlock 1820.0040

flow loop

circular showers

Flow Loop ApS

NIRAS Green Tech Hub

Sortemosevej 21

3450 Allerød, Danmark

www.flow-loop.com

info@flow-loop.com

+45 93 93 82 90

CVR: 38046349